

Notes:  
DO NOT SCALE FROM THIS DRAWING. USE FIGURED DIMENSIONS IN ALL CASES. VERIFY DIMENSIONS ON SITE AND REPORT ANY DISCREPANCIES TO THE ARCHITECTS IMMEDIATELY. THIS DRAWING TO BE READ IN CONJUNCTION WITH THE ARCHITECTS SPECIFICATION. © THIS DRAWING IS COPYRIGHT AND MAY ONLY BE REPRODUCED WITH THE ARCHITECTS PERMISSION.

Drawing Notes:

**Materials for Development**

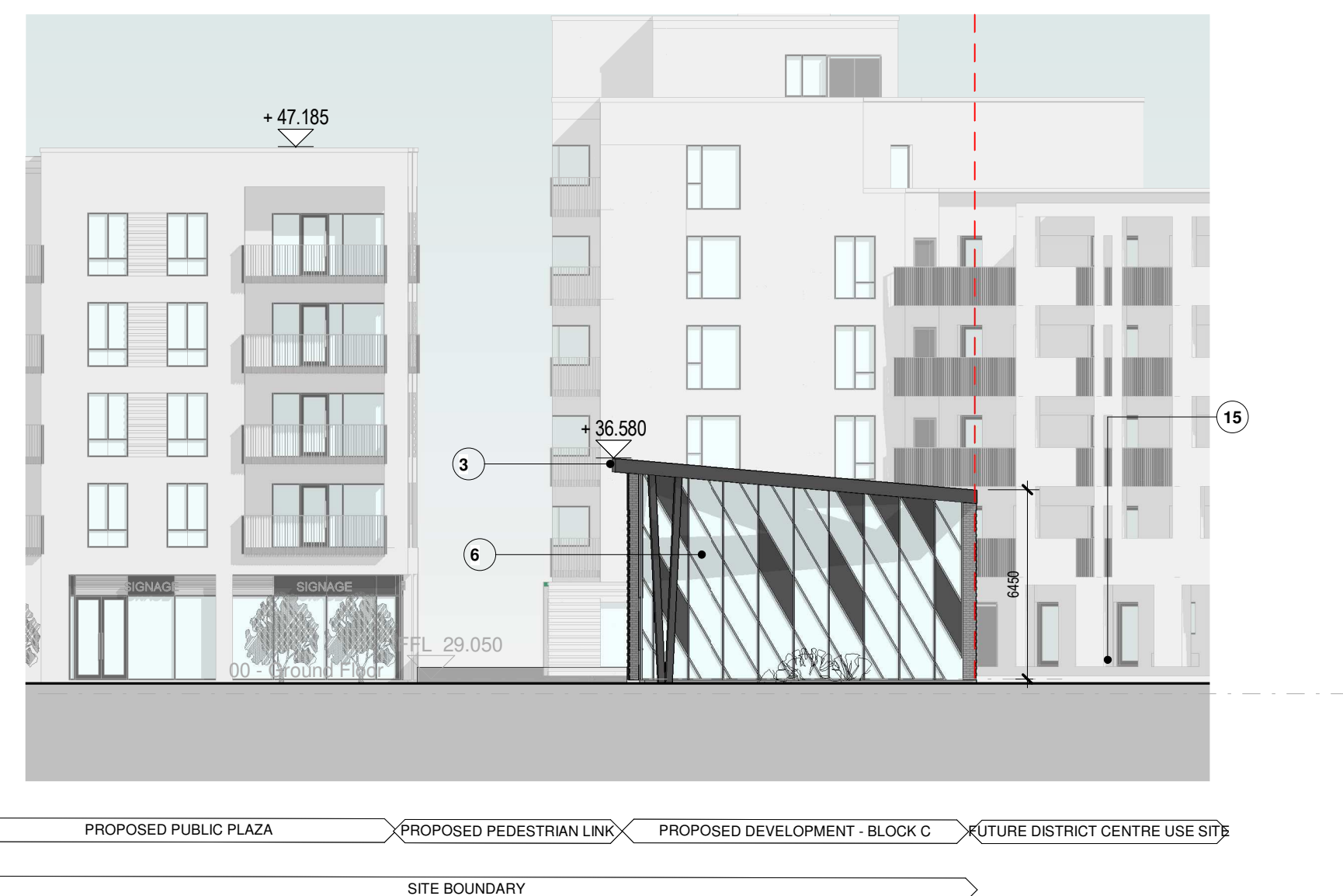
- 2 Selected Brick Finish.
- 3 Selected Metal Roof Finish.
- 4 Selected Windows & Doors.
- 6 Selected Polyester Powder Coated High Performance Glazing System.
- 15 Future District Centre Use Site. Subject to Future Planning Application.
- 16 Proposed Landscaping. Refer to Landscape Architects Drawings.
- 17 Wall & Railings. Refer to Landscape Architects Drawings.
- 34 Retail / F+B Signage.



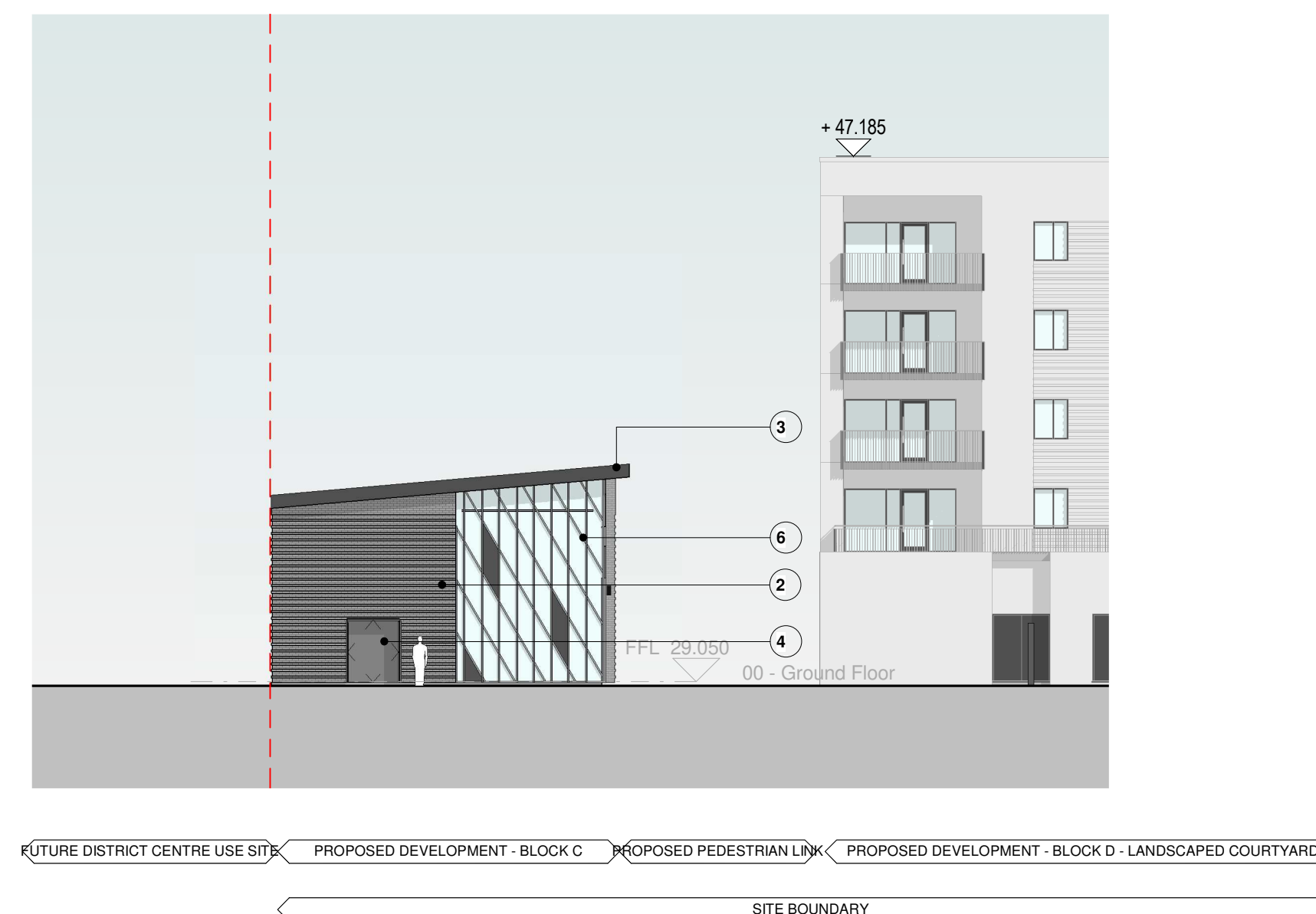
**1 BLOCK C - NORTH FACADE - FACING PUBLIC PLAZA**  
1 : 200



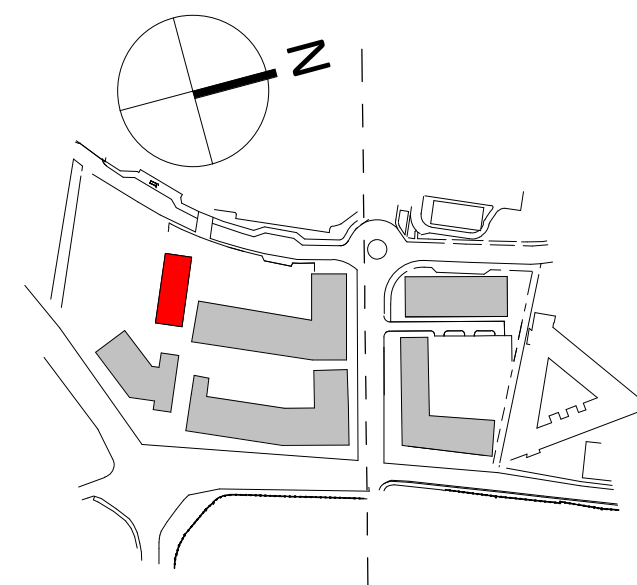
**2 BLOCK C - SOUTH FACADE**  
1 : 200



**3 BLOCK C - SIDE ELEVATION FACING ROAD**  
1 : 200



**4 BLOCK C - SIDE ELEVATION FACING BLOCK B**  
1 : 200



A	OCT 2019	OM	STAGE 3 APPLICATION
---	----------	----	---------------------

Rev	Date	DRN	Description
-----	------	-----	-------------

reddyarchitecture +urbanism  
 Reddy Architecture + Urbanism  
 Derriford Mills,  
 Derriford Road,  
 Dublin 6, D06 Y0E3.  
 T: +353 (0)1 4987000  
 W: www.reddyarchitecture.com  
 E: info@reddyarchitecture.com

Client Details:  
GLENVEAGH LIVING

Project Details:  
KNOCKNACARRA DISTRICT CENTRE,  
RAHOON, GALWAY.

Drawing Title:  
Block C Elevations 01

Job No P18-179	Date OCT 19	Scale@A1 1 : 200
Status FOR PLANNING	Drawn By: O.MORGAN	
Purpose PLANNING PERMISSION	Checked By: M.FREANEY	
Drawing Number P18179-RAU-ZZ-XX-DR-A-SLP-7205	Revision A	